

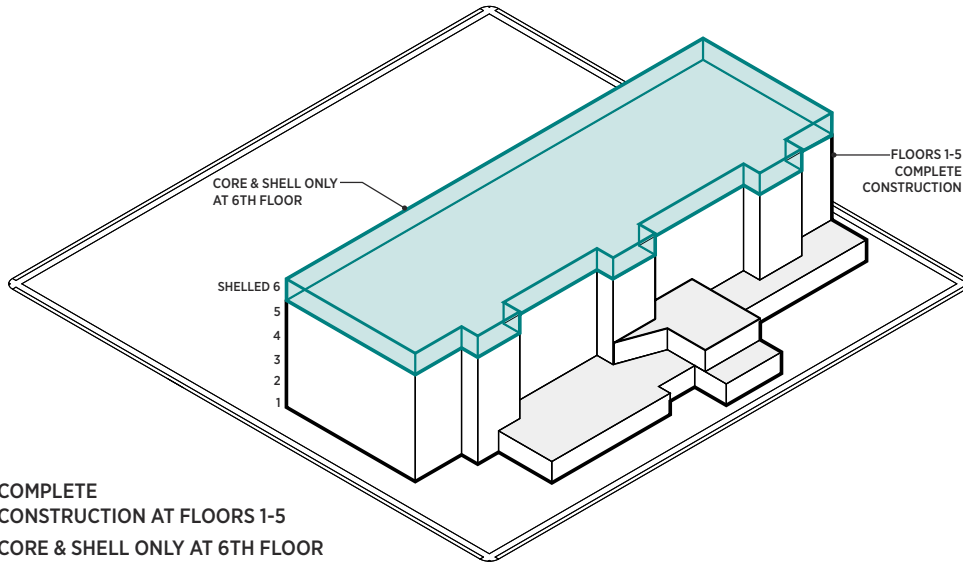
# **Weld County Justice Center**

## ***6-Story High-Rise — Recommended Concept***

DATE

April 1, 2026

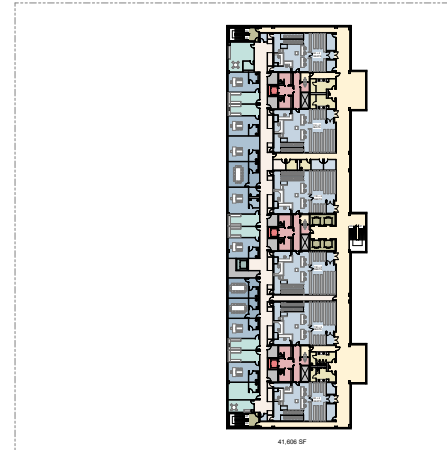
## 6-STORY HIGH-RISE (RECOMMENDED)



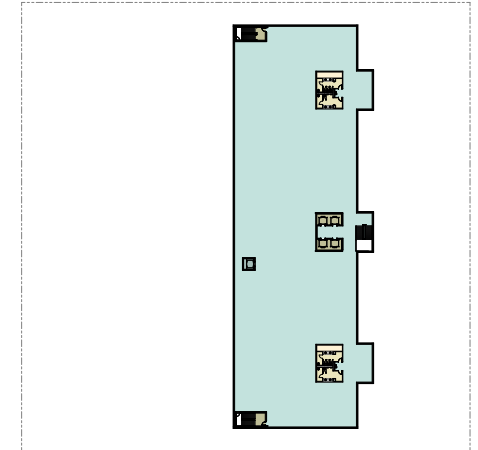
COMPLETE  
CONSTRUCTION AT FLOORS 1-5  
CORE & SHELL ONLY AT 6TH FLOOR  
24 COURTRROOMS

**S.F. & COST**  
281,405 S.F.- COMPLETE CONSTRUCTION  
**\$285.1M CONSTRUCTION COST**  
\$1,013/S.F.

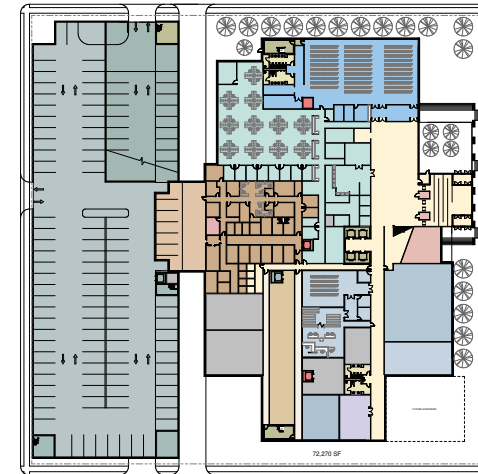
COURTRROOMS	
INITIAL -	24
INTERNAL EXPANSION -	9
33 - GOOD UNTIL 2071 (45 YEARS)	
ADDITION -	6
39 - GOOD UNTIL 2101 (75 YEARS)	



TYPICAL FLOOR PLAN



6<sup>TH</sup> FLOOR  
SHELLED PLAN



1<sup>ST</sup> FLOOR PLAN