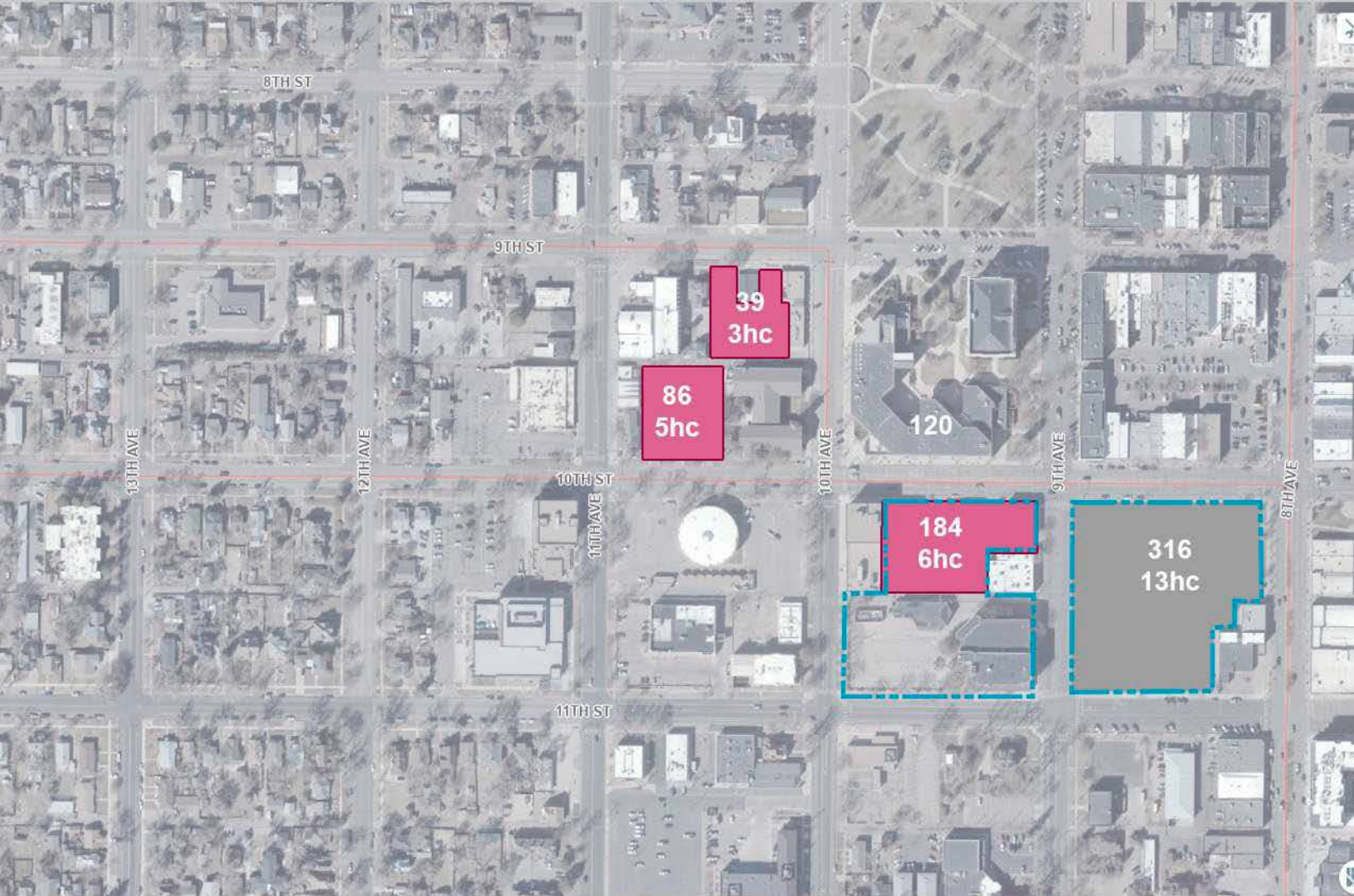


# **Weld County Justice Center**

## ***Parking Phases***

DATE

September 3, 2025

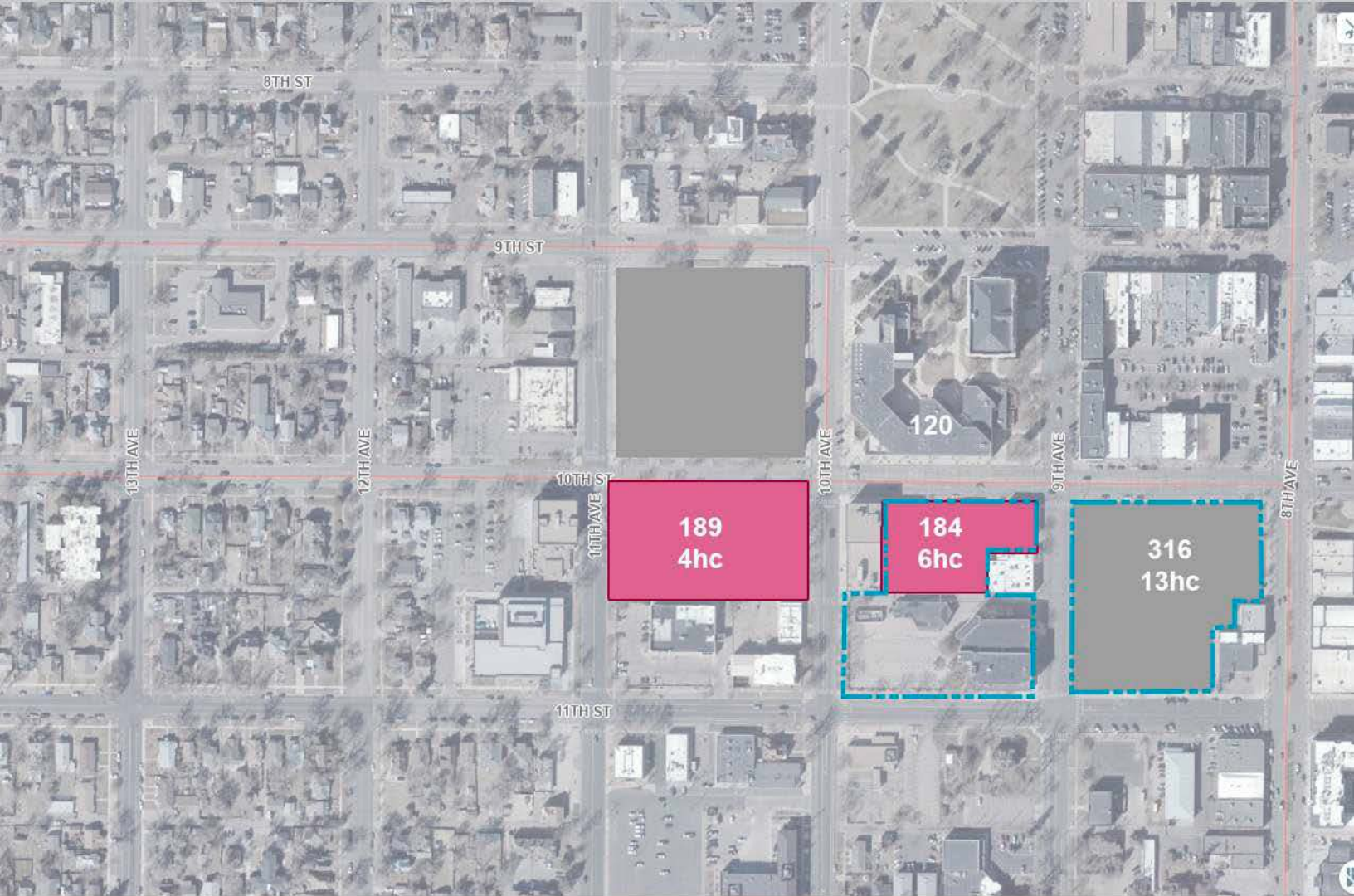


**Phase 1 - Juror Block construction (FALL 2026 - SUMMER 2028)**

- City operating in current building
- County operating in Centennial Center
- D6 operating in current building

**Parking Summary - County**

- Trophy Shop Temporary Parking	190
- Methodist Church Parking	91
- West Annex	30
- Weld County Temp Clinic	12
<b>ADDITION TOTAL</b>	<b>323</b>
<b>REMOVAL TOTAL</b>	<b>329</b>
<b>NET TOTAL</b>	<b>-6</b>



**Phase 2 - West Block construction (SPRING 2027 - SUMMER 2029)**

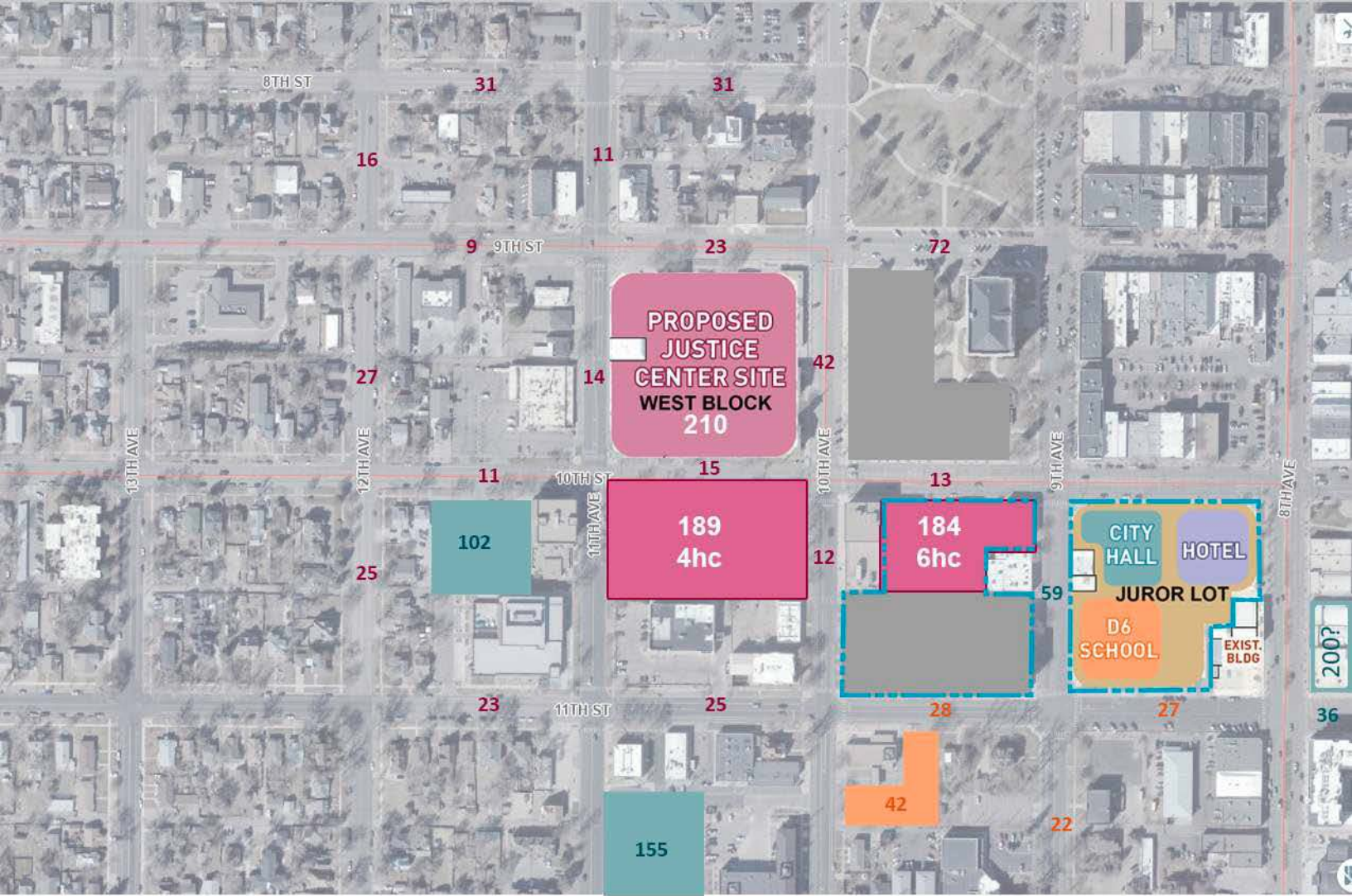
- City operating in temp building
- County operating in Centennial Center
- D6 operating in current building

**Parking Summary - County**

- Trophy Shop Temporary Parking	190
- City Hall Round Building	192
<b>ADDITION TOTAL</b>	<b>382</b>
<b>REMOVAL TOTAL</b>	<b>329</b>
<b>NET TOTAL</b>	<b>53</b>

**Parking Summary - City**

- Parking at temp locations



**Phase 3 - Parking Garage construction (FALL 2028 - WINTER 2029)**

- City operating in new building
- County operating in Centennial Center and new justice center
- D6 operating in new building
- Assumes no parking at Centennial Center

**Parking Summary - County**

- Trophy Shop Temporary Parking	190
- Justice Center underground	210
- City Hall Round Building	192
- On-street parking	398

**ADDITION TOTAL 990**

NEEDS FROM SUMMER TO WINTER 2029 (883 1/300sf)

**Parking Summary - City**

- City Center North	102
- Facilities Lot	155
- On-Street	95

**ADDITION TOTAL 352**

NEEDS(352)

**Parking Summary - D6**

- 11th Street Lot	29
- Cache Corner	13
- On-street parking	77

**ADDITION TOTAL 109**

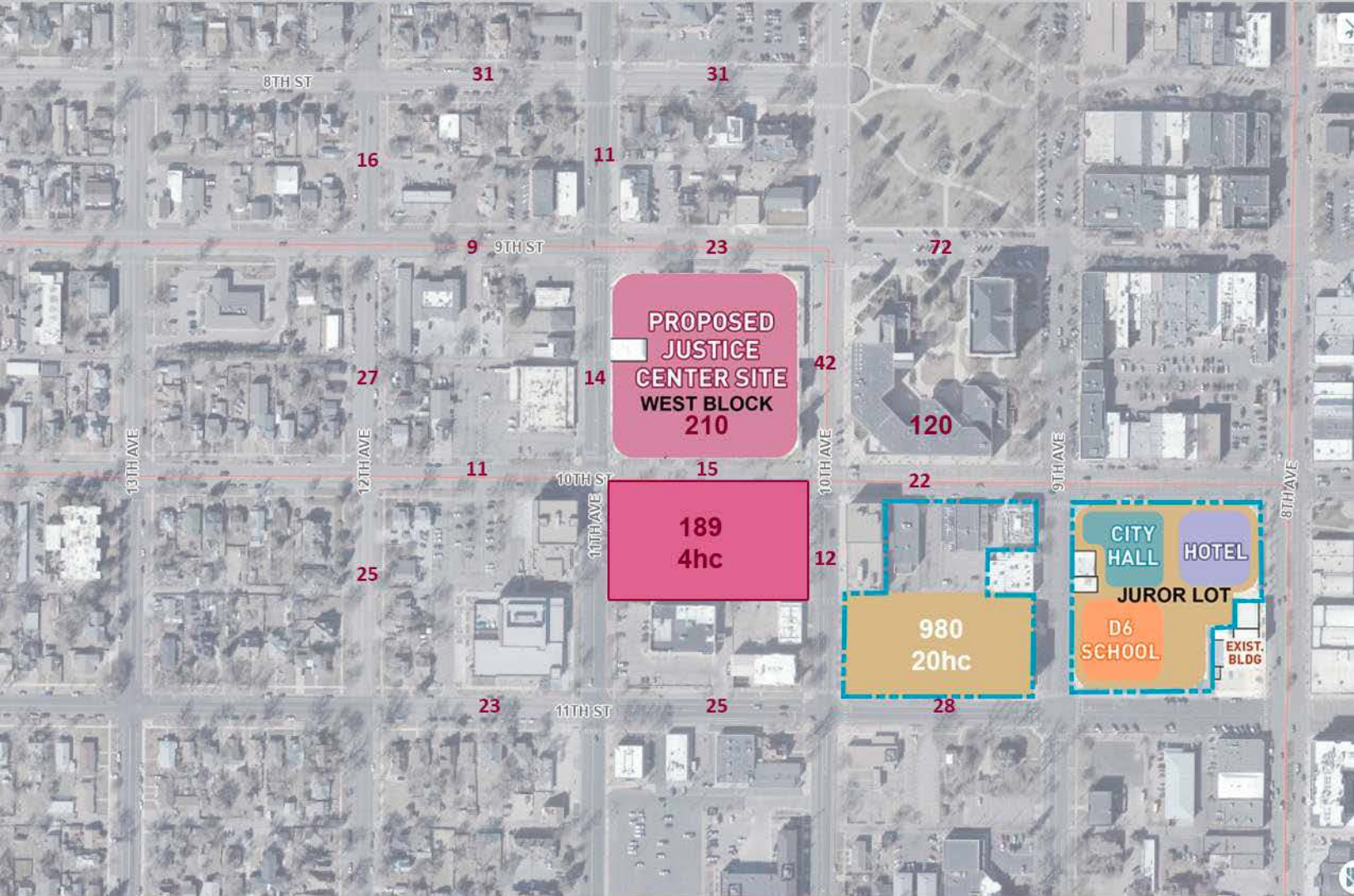
NEEDS (175 SPACES)

**Parking Summary - Hotel**

- X XX	
--------	--

**ADDITION TOTAL XX**

NEEDS (80)



**Phase 4 - FINAL (2031)**

- City operating in new building
- County operating in new justice center and new administration building
- D6 operating in new building

**Parking Summary - County**

- Centennial Center underground	120
- Justice Center underground	210
- City Hall Round Building	192
- Parking Garage (\$21.5M/\$45k)	478
- On-street parking	437
<b>ADDITION TOTAL</b>	<b>1437</b>
NEEDS (1600)	

**Parking Summary - City**

- Juror Lot surface parking	5
- Parking Garage	347
<b>ADDITION TOTAL</b>	<b>352</b>
NEEDS(352)	

**Parking Summary - D6**

- Juror Lot surface parking	5
- Parking Garage	170
<b>ADDITION TOTAL</b>	<b>175</b>
NEEDS (175 SPACES)	

**Parking Summary - Hotel**

- Parking Garage	80
<b>ADDITION TOTAL</b>	<b>80</b>
NEEDS (94)	